

PRINTING on a CANON iPF5100

BASIC WORKFLOW

- set the front panel of the printer
 - set the paper feed source to **SHEET**, not **ROLL PAPER**
 - set the paper type to the desired medium
 - set the paper size
 - load the paper
- open the Print Plug-In from the File> Export menu
 - set parameters under the **MAIN** tab
 - activate the Proofing Controls on the Main tab
 - set parameters under the **PAGE SETUP** tab
 - check parameters under the **COLOR SETTINGS** tab
- print the picture
 - check the **PRINT MONITOR** window

ON the PRINTER –

SET the FRONT PANEL for Digital Prints
set the front panel controls first:

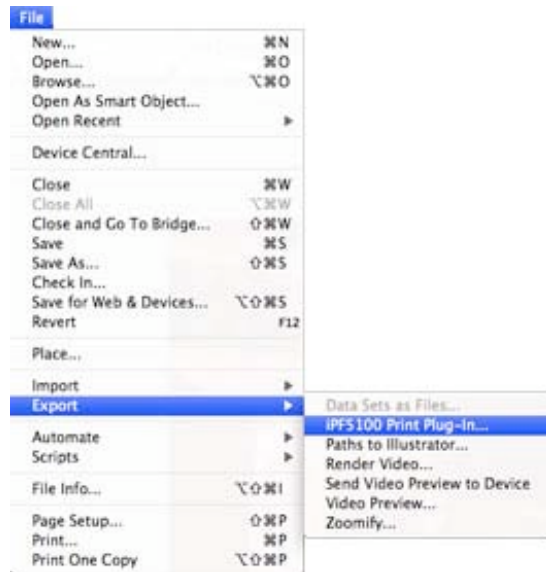
feed: Sheet (not Roll) hit the Load/Feed button to change
place the paper into the top feeder with the coated side facing you
use the Dial Keys to specify the type and size of the paper
media type: dial up the appropriate paper type
hit [OK] to make that selection
size: dial up the appropriate paper size
hit [OK] to make that selection
this will also begin to load the paper
status window will read:
Offline, Loading...
the paper will be drawn into the printer and loaded
wait for the status window to read Online Letter

ON the COMPUTER, in PHOTOSHOP –

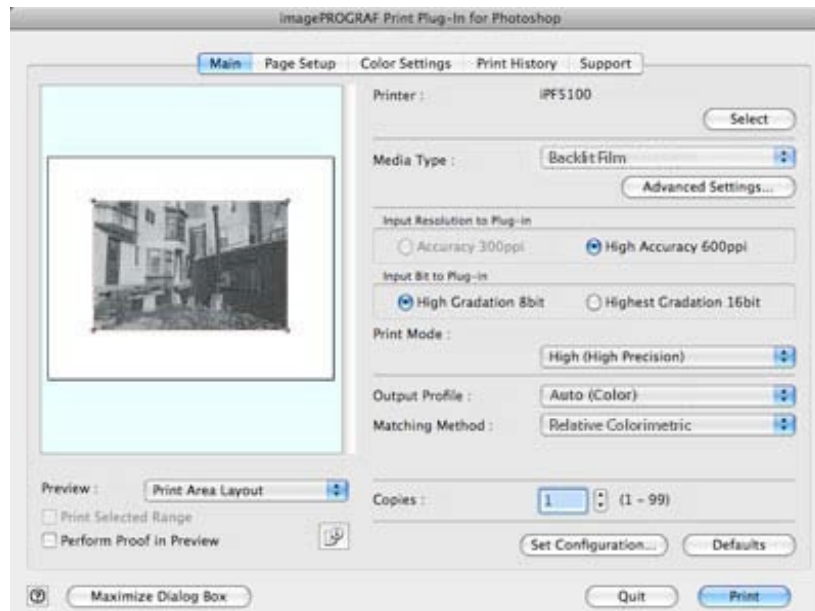
OPEN the PRINT PLUG-IN
the Plug-in window can be made larger
by clicking on the Maximize Dialog Box button
then set the Print Dialog Box specs in the Export Plug-in window:

PRINTING on a CANON iPF5100, cont'd

open the Export Plug-in for the Canon printers
use FILE> EXPORT> IPF5100 PRINT PLUG-IN...



SET the MAIN PARAMETERS
set all the essential specs in the MAIN window
select the MAIN tab



media type: your choice of Photo Paper
resolution: High Accuracy 600ppi
image bit to plug-in: High Gradation 8 bit
print mode: High (High Precision)

PRINTING on a CANON iPF5100, cont'd

ACTIVATE the SOFT PROOFING CONTROLS

turn on proofing and select the paper profile in the Main window

turn on **PERFORM PROOF IN PREVIEW**

in the bottom left-hand corner

output profile: select the correct profile based on the media type

will default to the last used settings

use the Canon profiles for Epson paper

look at the Preview Image

it should change to the correct tonality

when the best profile is set

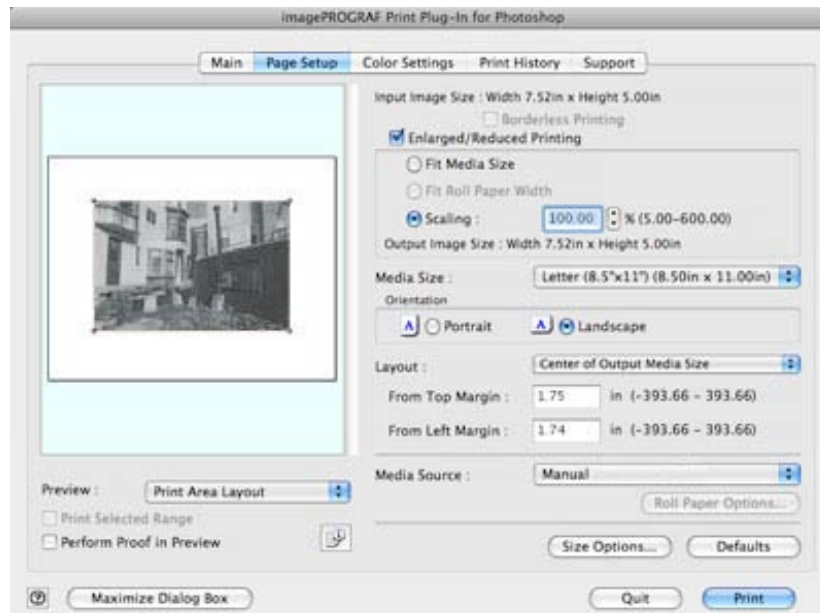
matching method: Perceptual

toggle to Relative Colorimetric to see if the print looks any better

SET the PAGE SETUP PARAMETERS

set all the essential specs in the **PAGE SETUP** window

select the **PAGE SETUP** tab



set: Enlarged/ Reduced Printing (usually turned off)

scaling: 100%

leave a 2" border minimum

it is possible to rescale the print size here

but DO NOT enlarge more than 10% (Photoshop does a better job)

media size: Letter (8.5 x 11")

orientation: Portrait or Landscape, as required

layout: Center of Output Media Size

subtract 0.10 in the 'From Top Margin' box

position can also be altered by dragging the image in the box

media source: Manual

PRINTING on a CANON iPF5100, cont'd

CHECK the COLOR SETTINGS PARAMETERS

zero out all of the specs in the Color Settings window

select the **COLOR SETTINGS** tab

make sure : all color sliders are at 0



PRINT the PICTURE

print one or several pictures

hit: [PRINT] to proceed

or [RETURN] key or [ENTER] key

the Print Dialog Box will remain open

so more prints can be made with these settings

or other settings may be used

if you have access to another inkjet printer, that can be used as well

printers are available in the Tech Center, and

Tyler's Media Output Center (2nd floor)

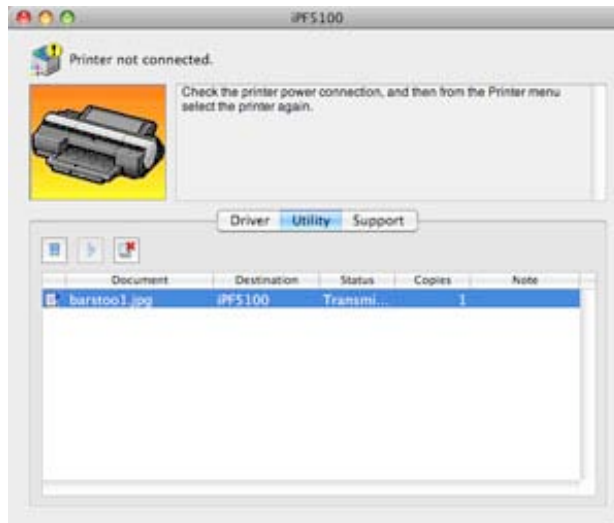
PRINTING on a CANON iPF5100, cont'd

ON the COMPUTER, OTHER SOFTWARE –
CHECK the PRINT MONITOR
if nothing seems to be happening

select: the imagePROGRAF Printmonitor icon in the Dock



click on: the **UTILITY** tab
make sure your document is listed
delete any other documents that may be left over from a previous user
click on: the **PLAY** button



the **PLAY** button will 'grey out'
the **PAUSE** and **DELETE** buttons will become prominent
ignore any 'Printer not connected' warnings
this is usually remedied by re-loading some paper